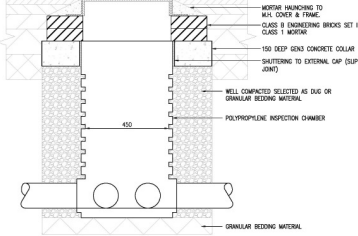
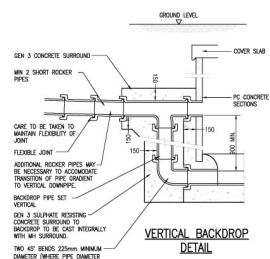


**REDUCED ACCESS POLYPROPYLENE INSPECTION CHAMBER DETAILS (RAPPIC)** 1.10  
(DEMARCATION CHAMBER DEPTH TO SOFFIT 1.2M TO 2.0M)

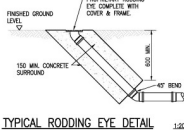


**POLYPROPYLENE INSPECTION CHAMBER DETAILS (PPIC)** 1.10  
(DEMARCATION CHAMBER DEPTH TO SOFFIT UP TO 1.2M)

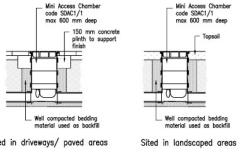


**VERTICAL BACKDROP DETAIL**

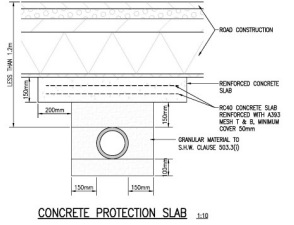
- YORKSHIRE WATER NOTES:**
- 1) ALL ADAPTABLE COVER WORKS AND MATERIALS TO BE IN ACCORDANCE WITH 'STANDARDS FOR ADAPTABLE' 6TH EDITION, THE RELEVANT BRITISH/EUROPEAN AND YORKSHIRE WATER'S STANDARDS REQUIREMENTS/RECOMMENDATIONS TO THE MEDIAN AND ELECTRICAL SPECIFICATION AND KITEMARKS.
  - 2) MANHOLE COVERS SHALL HAVE A CLEAR OPENING OF 800mm AND SHALL BE CLASSIFIED TO BS EN 124 WITH 120mm DEEP FRAMES IN WORKING.
  - 3) FILLED GROUND MUST BE FILLED AND CONSOLIDATED UNDER THE SUPERVISION AND TO THE SATISFACTION OF YORKSHIRE WATER BEFORE ANY OTHER WORKS ARE CARRIED OUT.
  - 4) YORKSHIRE WATER IS NOT OBLIGED TO ACCEPT FILTER DRAINAGE AND DRAINAGE POINTS WHOSE DESIGN NETWORK OR FOOTPATH DRAINAGE SYSTEM (DIRECTLY OR INDIRECTLY) AN ALTERNATIVE METHOD OF DISPOSAL OF THE LAND DRAINAGE ALREADY WILL THEREFORE BE REQUIRED AND YOU WILL HAVE TO LIAISE WITH LOCAL AUTHORITY LAND DRAINAGE SECTION WITH REGARD TO THE DISPOSAL OF THE FILTER DRAINAGE DRAINAGE RUNOFF.
  - 5) COVER SLABS MUST CARRY THE FULL NETWORK OR WILL BE SELECTED BY YORKSHIRE WATER. THE CLEAR OPENING OF THE KITEMARKED PRODUCT IS DIFFERENT TO THAT OF THE COVER AND FRAME. A LANDING BEARING SLAB SHOULD BE PROVIDED UNDER THE COVER SLAB TO BE SIZED DOWN TO 800mm x 800mm FOR YORKSHIRE WATER SPECIFIED COVER SIZE. PLEASE REFER TO CONCRETE PIPE SYSTEMS ASSOCIATION (CPA) TECHNICAL BULLETIN 'SEALED AUSTIN 2004' FOR KITEMARKED COVER SLAB OPENING SIZES.
  - 6) SULPHATE RESISTANT CEMENT (SR3) AND PRECAST CONCRETE PRODUCTS MUST BE USED ON A SANDWICH ROCKER PROVIDED PROVIDED SUCH PRECAUTIONS ARE NOT NECESSARY.
  - 7) THE ADAPTABLE COVER SHOULD BE A MINIMUM OF 1m AND MANHOLES 2.0m FROM ROADS SIDES AND SOURCE MARGINS.
  - 8) 'STANDARDS' MUST HAVE 5 METRES CLEARANCE FROM TREES AND HEDGES. PLEASE ALSO REFER TO FIGURE 2.3 ON PAGE 33 IN 'STANDARDS FOR ADAPTABLE' 6TH EDITION FOR RESTRICTIONS ON TREE PLANTING ADJACENT TO 'STANDARDS'.
  - 9) 'STANDARDS' TO BE LAID IN CLASS 'N' BEDDING (150mm GRANULAR BEDDING AND SURROUND) MINOR DEPTH OF COVER TO TOP OF 'STANDARD' IS LESS THAN 1.2m IN HORIZONTAL AND VERTICAL (OR LESS THAN 800mm IN SOME VERTICAL ACCESS AREAS) THEN A CONCRETE SLAB SHOULD BE PROVIDED ABOVE GRANULAR BED AND SURROUND.
  - 10) BEDDING AND BACKFILL MATERIALS TO CONFORM TO REQUIREMENT OF WATER RESISTANCE SPECIFICATION 4-05-02 (EN45-02).
  - 11) THE CHAMBER SIZE OF MANHOLES WITH MORE THAN ONE CONNECTION IN THEM MAY NEED TO BE INCREASED OR INCREASED TO ACCOMMODATE THE CONNECTIONS AND BENDS.
  - 12) YORKSHIRE WATER POLICY IS NOT TO ACCEPT THREE 'T' BEND MANHOLES AND '1000mm DIA MANHOLE BENDS' BECAUSE IF IS PRECISED THAT YOU USE A TYPE 'T' MANHOLE WITH 1000mm DIA OR 1500mm DIA BRICKS, WITH THE OPENING SIZES OVER THE CHAMBER, MINOR DEPTH OF COVER TO THE SOFFIT IS 1-1.5m.



**TYPICAL RODDING EYE DETAIL** 1.20



**MINI ACCESS CHAMBER DETAILS (MAC)**



**CONCRETE PROTECTION SLAB** 1.10

|  |   |
|--|---|
| (3) THE OTHER SIDE OF THE DRAWING  |   |
| SAFETY HEALTH AND ENVIRONMENTAL INFORMATION  |   |
| IN ADDITION TO THE HAZARDS/RISKS NORMALLY ASSOCIATED WITH THE TYPE OF WORK DETAIL ON THIS DRAWING, NOTE THE FOLLOWING RISKS AND INFORMATION.                                 |   |
| RISKS LISTED HERE ARE NOT EXHAUSTIVE. REFER TO DESIGN ASSOCIATION FORM NO.   |   |
| CONSTRUCTION   |   |
| DEMOLITION   |   |
| FOR INFORMATION RELATIVE TO USE, CLEANING AND MAINTENANCE, SEE THE HEALTH AND SAFETY FILE.   |   |
| IT IS ASSUMED THAT ALL WORKS WILL BE CARRIED OUT BY A COMPETENT CONTRACTOR WORKING UNDER APPROPRIATE TO AN APPROVED METHOD STATEMENT.  |   |
| NOTE:<br>ALL DETAILS SHOWN ARE UNDER REVIEW BY RELEVANT ADOPTING AUTHORITY. FOLLOWING REVIEW ADDITIONAL WORKS & MATERIALS MAY BE REQUIRED FOLLOWING POSSIBLE RE-DESIGN WORKS |   |
| NOTE:<br>ALL DETAILS SHOWN ARE SUBJECT TO YORKSHIRE WATER SECTION 104 TECHNICAL APPROVAL   |   |
| (DATA: WALLS 15/08/2015)   |   |
|  |   |
| <b>STIRLING MORTIMER</b><br>NO. 8 UK<br>LAND FUND LTD  |   |
| SHEET NO. 104<br><b>SECTION 104 DRAINAGE DETAILS SHEET 2</b>   |   |
| DATE OF ISSUE: 03/07/19<br>DRAWN BY: [Name]<br>CHECKED BY: [Name]  | SCALE: 1:50<br>PROJECT: [Name]<br>DRAWING NO.: [Name] |
| 129596/2005  |   |